



OLEC

Products by **FABCON**

Accutray Imaging

Engineered for performance

OLEC brand products are the leading systems for imaging printed circuit boards and photo etch



- Process include: innerlayer, outterlayer, soldermask
- Improved Productivity and Yield
- Data Collection and real time registration feedback
- Process Tolerance Control
- Dual Trays for optimized production
- Quick and easy artwork change over and set up
- Touch Screen for easy operation
- Microsoft Windows Platform
- Six Models to Choose from
- Made In USA

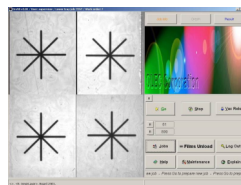
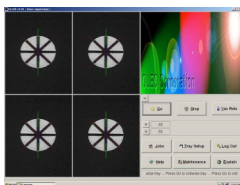
The AccuTray handles tasks impossible to achieve using conventional equipment and offers a higher level of control and versatility.

Improved Machine Features

New Accuglide Trays with ball bearing anti-friction drive

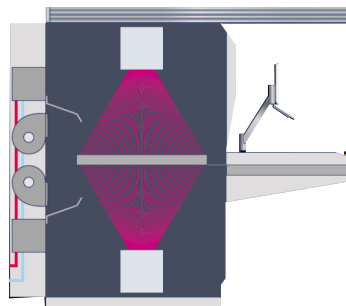
New Multiport Video simultaneously captures & processes targets

New camera lighting enhances feature recognition and improves alignment

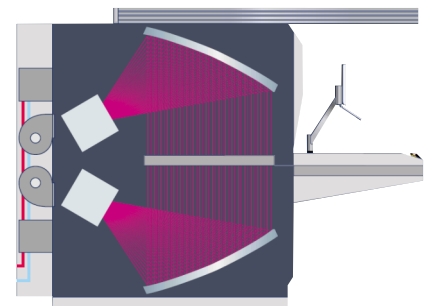


Multiport Video 4 Cameras for Shorter Registration time

Point Light Optics



Hybrid Optics



Digital Imaging



Coaters



InkJet

Graphic Arts



Specialty Coaters



Lights & Integrators

Printed Circuit



Automated Image



Imaging

Screenprint



Dryers



UV Cure

Packaging



Platemaker



Meters



Lamps

Photo Etch



Auto Align

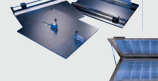


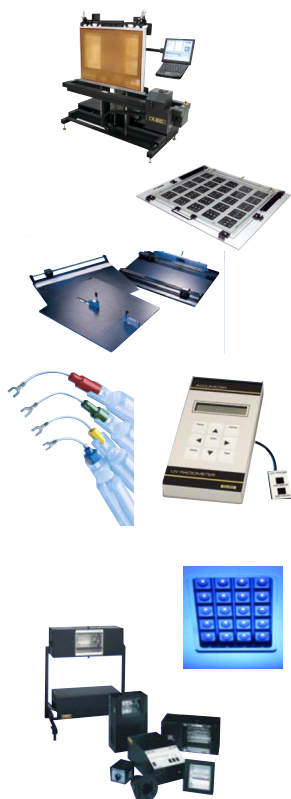
Photo Tools

Specifications

| Model | Description | Max Image | Power | Electrical | Air | Water |
|----------|--------------------------|----------------------|------------|-------------------------------|-----------------------------|----------------------------|
| ATH 30-8 | 8k Hybrid, 4 Camera | 20" x 24" 51 x 61cm | 5,000 watt | 208/240volt, 55amp, 60hz, 3ph | 90psi/12cfm 6.2bars/335 clm | 7gpm/261ltr LPM/45°f/ 7°c |
| ATH 32-8 | 8k Hybrid, 4 Camera | 24" x 30" 61 x 76cm | | 380volt, 35amp, 50hz, 5wire | 90psi/12cfm 6.2bars/335 clm | 7gpm/261ltr LPM/45°f/ 7°c |
| AT 30-5 | 5k Point Light, 4 Camera | 24" x 28" 61 x 71cm | | | | |
| AT 30-8 | 8k Point Light, 4 Camera | 24" x 28" 61 x 71cm | | | | |
| AT 32-8 | 8k Point Light, 4 Camera | 24" x 30" 61 x 76cm | 8,000 watt | 208/240volt, 65amp, 60hz, 3ph | 90psi/12cfm 6.2bars/335 clm | 10gpm/381ltr LPM/45°f/ 7°c |
| AT 38-8 | 8k Point Light, 4 Camera | 30" x 38" 76 x 97cm | | 480volt, 35amp, 60hz, 3ph | 90psi/12cfm 6.2bars/335 clm | 10gpm/381ltr LPM/45°f/ 7°c |
| AT 42-8 | 8k Point Light, 4 Camera | 34" x 42" 86 x 107cm | | 380volt, 50amp, 50hz, 5wire | 90psi/12cfm 6.2bars/335 clm | 10gpm/381ltr LPM/45°f/ 7°c |

LED Optional

Options & Accessories



| Model | Description | Size |
|---------------------------------|-------------------------------------|---------------|
| Digital Imaging | | |
| DSI | Direct Screen Imager | 30x40 |
| UVC | Legend Direct Printer | 32 wide |
| Phototools & Punches | | |
| ATP | Accutray Film Punch | 24x30 |
| CFP | Camer Assist Film Punch | 26x32 |
| SLMA | Adjustable Glass phototools | 20x26 - 25x31 |
| SL 18 | Snaplock Glass phototool | 20x26 - 34x42 |
| System Accessories | | |
| AM | AccuMeter with dual probe, software | |
| L1250 | 5000 watt Diazo/Photopolymer | |
| L1261 | 5000 watt Photopolymer | |
| L1252 | 5000 watt Photopolymer/Diazo | |
| L1281 | 8000 watt Photopolymer | |
| L1280 | 8000 watt Diazo | |
| L1282 | 8000 watt Photopolymer/Diazo | |

System Options

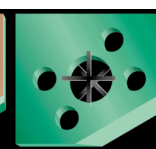
| | |
|--|----------------------------|
| LED Imaging Source | Hepa filter |
| 5,000 or 6,000 Watt light sources | Imaged Glass Master holder |
| Absolute Value, lower glass register marks | Statistical Register |
| Vision align kit, display and micro adjust tools | Stainless Steel |
| Auto open (AT 32 only) | |

Camera Alignment Targets


 Innerlayer / PCM
Film to Film

 Etched Feature
Single Sided

 Outerlayer / Innerlayer
Pre-Punched

 Soldermask Fiducial
Two Sides

 Outerlayer Statistical
Registration

 Laser-Drill
Skived To Innerlayer
